

zintek®



THE
COLORED
ONES

 **zintek**[®]
ZINC-TITANIUM IN ARCHITECTURE

THE COMPANY

Zintek S.r.l. is a member company of the Cordifin Group, a Venetian holding company that operates internationally in the industrial, real estate, and financial sectors. The Cordifin Group is also the only Italian manufacturer of laminates in zintek® zinc-titanium.

The zintek® laminate, entirely Made in Italy, is a high-quality zinc-copper-titanium alloy.

The zintek® manufacturing plant has been operational in Porto Marghera-Venice since 1936 and covers an area of 86 thousand square meters.

An Italian reference point for the

construction of **roofs, façades** and zinc-titanium **sheet metal** suitable for any environment, Zintek has worked on a number of high profile projects throughout the country.

The following list includes some of the **most relevant projects** Zintek S.r.l. has worked on: **new buildings** (in Milan: the UniCredit Pavilion, the new headquarters of Prysmian and the San Luca Auxological Hospital; the Cittadella dell'Edilizia, in Porto Marghera; the Alitalia headquarters, in Rome); **restoration projects** (Hilton Hotel Molino Stucky on Giudecca Island, Venice; Palazzo delle Poste, Trieste;

dome of the Church of St. Michael the Archangel in San Michele di Piave-TV); **redevelopment of historical buildings** (headquarters of the "Saint Anthony of Padua" periodical, Padua; Le Conterie on Murano Island, and several buildings in the Historical Center of Venice). The company has also participated in **relevant international projects**, for example Le Albere di Trento neighborhood, designed by Renzo Piano.

Today Zintek is expanding to the international market with a line of totally innovative products, offered through specific sales channels.



THE COLORED ONES

A project for your future

A FUTURE FOR YOUR PROJECTS



ZINTEK®: NOW ALSO IN COLOR

Always attentive to the latest trends, Zintek is proud to present a new proposal in the world of architecture and design: six colors that emphasize the nature of zinc-titanium zintek®, while maintaining its properties intact.

Mediterranean Blue, Lagoon Green, Antique Red, Natural Earth Brown, Rock Grey and Graphite Black: color meets material and becomes an actual architectural element.

Choosing zintek® means choosing the visible and tangible pleasure of a material which is alive and long lasting, capable of maintaining its value intact over the course of the years.

ARCHITECTURE OF MATTER: THE VALUE THAT MAKES THE DIFFERENCE

INNOVATION



Zintek is launching on the market a line of colored laminates obtained with a pigment coloring process that offers a wide range of possibilities for applications.

TECHNOLOGY



The colors have been developed to highlight the aesthetic quality of zintek® laminate, while maintaining its technical and functional characteristics intact.

VERSATILITY



The zintek® laminates are ideal for architecture and interior design, and they give personality and originality to every project, in full harmony with the environment.



MEDITERRANEAN BLUE

The fascinating charm of the underwater world reproduced in a soft color tinged by striking venations, worthy of the king of the seas.



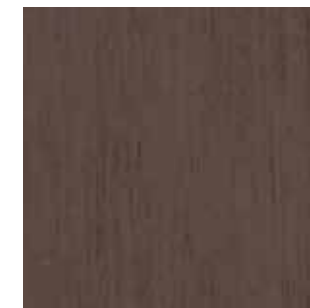
LAGOON GREEN

A tribute to the city of Venice and the changing colors of the waters overlooked by the bridges and palaces of the glorious Serenissima.



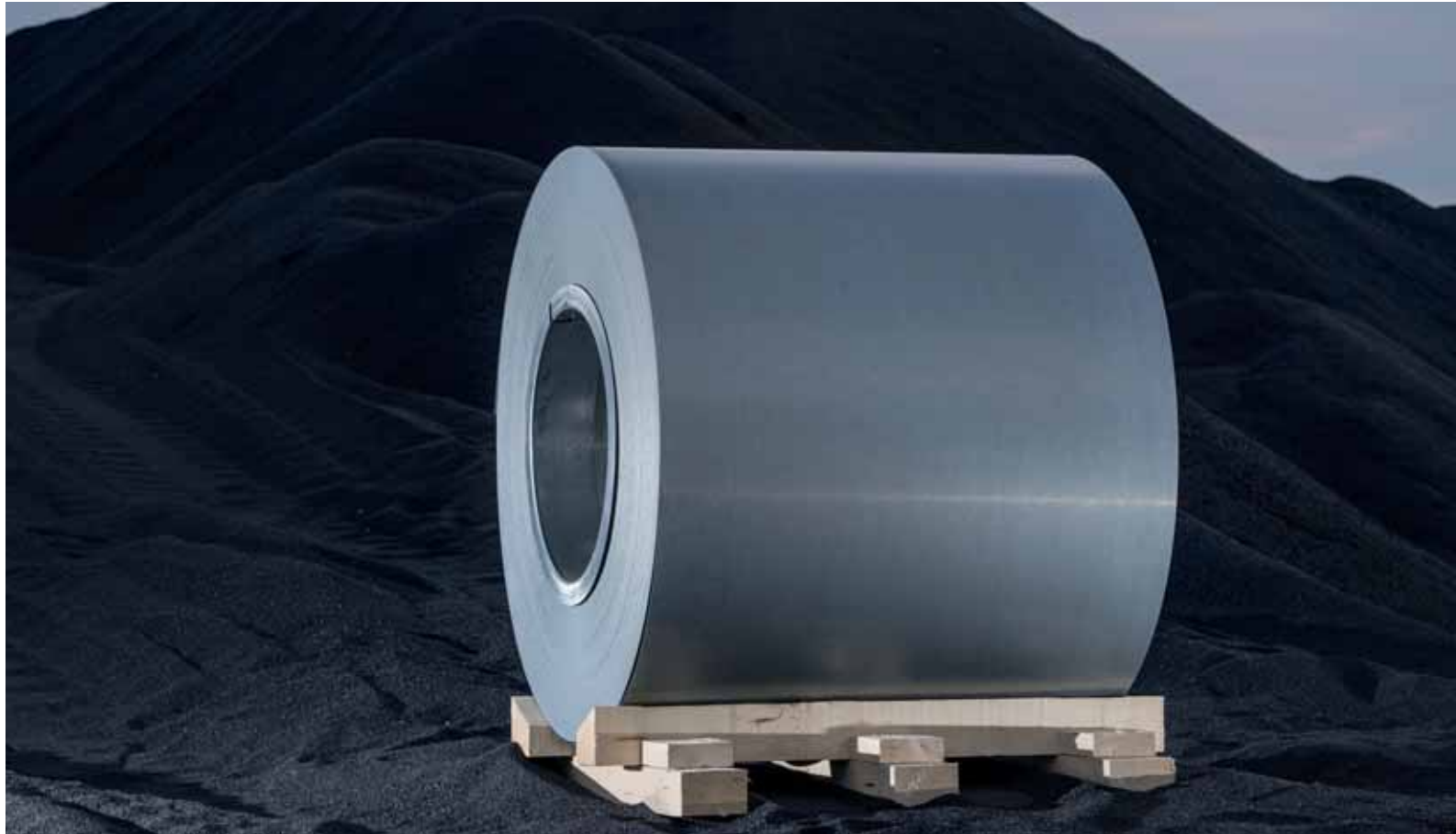
ANTIQUE RED

The red that has always defined the image of "home", from the walls that protect to the roof that covers. Same color, revolutionary performance.



NATURAL EARTH BROWN

A tribute to the color of the earth, to the ground that sustains forests and cities. A fitting reminder of humanity's responsibilities towards the well-being of the planet.



ROCK GRAY

The traditional color of zintek®, the strong and elegant grey which covers the main buildings of every city and, just like rock, stands the test of time.



GRAPHITE BLACK

Graphite is a mineral that, like very few of others... *leaves a mark*. Each work is born with the stroke of a pencil, which follows the project from concept to reality.

Today, Zintek supplies any solution related to the choice and installation of the zintek® laminate. A reference point for the construction of zinc-titanium covering solutions, façades and tinsmithery, the company is now entering the **international market with a line of innovative products.**

Its mission is to ensure the beauty, longevity and authenticity of buildings in every context, from new edifices to conservative restoration operations, up to the regeneration of constructions in disuse, thanks to the unique quality of its organization and of its product.



CONTEMPORARY CONSTRUCTION



CONSERVATIVE RESTORATION



REGENERATION OF BUILDINGS

The increased commercialization and diffusion of zinc-titanium laminates in Europe and in the rest of the world can be explained within an ever more innovative architectonic scenario where the demand for new materials, capable of adapting to unprecedented forms, is constantly growing.



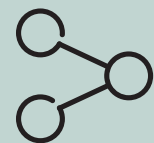
COVERING SOLUTIONS

zintek® adapts to any design project, even the most elaborate.



FAÇADES

the different installation techniques ensure uniform and regular surfaces.



TINSMITHERY

the catalogue offers a vast selection of eaves, drains, downpipes and accessories.

UNI EN 988 - COMPOSITION IN %				UNI EN 988 – MECHANICAL CHARACTERISTICS				MASS CALCULATIONS		
Cu	Ti	Al	Zn	Offset from proportionality unit load	0,20%	Rp 0,2	N/sq. mm	min 100	Nominal thickness mm	Approximate mass Kg/sq. m.
min	min	min		Tensile strength		Rm	N/sq. mm	min 150	0,60	4,30
0,080	0,060	-	resto	Elongation percentage after break		A50mm	%	min 35	0,65	4,70
max	max	max		Sliding elongation percentage			%	max 0,1	0,70	5,00
1,000	0,200	0,015		Minimum hardness				HV 45	0,80	5,80
Z1-quality zinc									1,00	7,20

PHYSICAL AND TECHNOLOGICAL CHARACTERISTICS		
Description	Measurement unit	Value
Density	Kg/dm³	7,14
Melting point	°C	419
Specific heat at 20°C	kJ/Kg °C	0,401
Thermal conductivity at 20°C	W/m °K	109
Electrical conductivity at 20°C	m/ohm sq. mm	17
Thermal expansion coefficient in parallel direction to the lamination	mm/m °C	0,022
Thermal expansion coefficient in transversal direction to the lamination	mm/m °C	0,017
Re-crystalization limit	°C	>300
Elasticity modulus	N/ sq. mm	>80.000
Erichsen value	mm	07-09
Bend test at 180° 20°C in longitudinal direction	n°	3 minimum
Bend test at 180° 20°C in transversal direction	n°	5 minimum
Rigidity	%	40-55
Non magnetic		
Non combustible		



zintek®

MADE IN ITALY

MADE IN VENICE

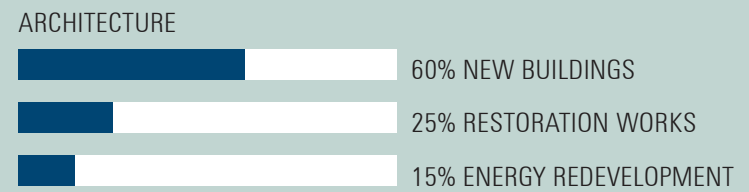
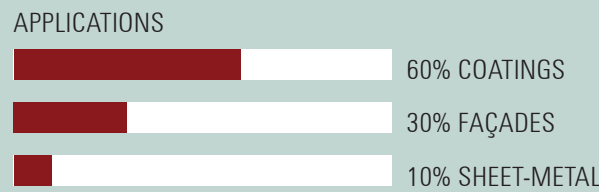


ZINC Zn

COPPER Cu

TITANIUM Ti

zintek® is an alloy composed of zinc, copper and titanium, produced with high-quality 99.995% zinc, in full observance of European standard EN 1179, with the addition of alloying elements. The zintek® laminate complies with European standard EN 988 "Zinc and Zinc alloys - Specifications for flat laminate products and for construction works." The alloy components which improve the characteristics of zinc in the laminate are titanium, which increases resistance to permanent deformation, and copper, which increases tensile strength. The combination of these two components reduces the alloy's expansion coefficient.





COMPANY

Zintek S.r.l. is a member of Cordifin Group and the only Italian manufacturer of zinc-titanium zintek® laminate



PLANT

Operational since 1936 in the Venetian industrial area, our plant covers an area of 86,000 sq. m., 48,000 of which are indoors.



PRODUCTION

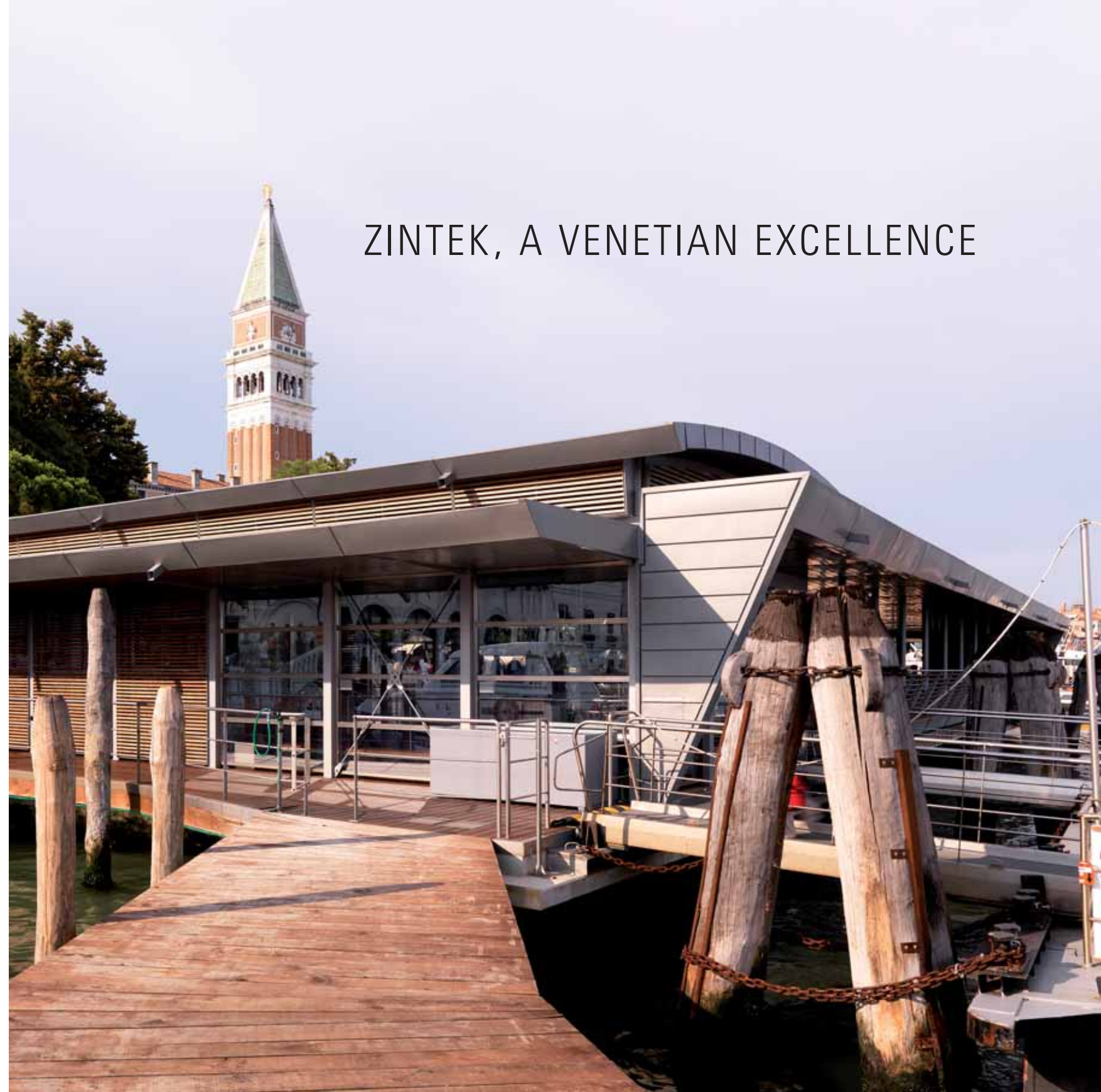
The plant produces more than 100,000 tons of semi-processed zinc each year.



With regards to environmental sustainability, Zintek complies with all requirements provided by the reference standards for its typology of product, including the Sustainable use of natural resources, by implementing the mapping of LEED® credits, and is furthermore assessing the life cycle of its product with the Life Cycle Assessment method. Zintek is also certified according to ISO 9001, ISO 14001 and OHSAS 180001, and affixes the EC label on all its products.



ZINTEK, A VENETIAN EXCELLENCE



ZINTEK: AT YOUR SERVICE

SAMPLES

Ask for color
samples

MATERIAL

Request technical information
on the laminates



 zintek®

Zintek S.r.l.
via delle Industrie, 22
30175 Porto Marghera, Venice, Italy
Tel. +39 041 2901866
zintek@zintek.it
www.zintek.it | mrtinsmith.zintek.it



zintek® production plant - 86.000 sq. m.

Concept

Zintek S.r.l.

Design and layout

creative-lab.it

Photographic references

Zintek S.r.l. Archive

Print

February 2018

Grafiche Antiga

©2018 by Zintek S.r.l. Venice Italy

Any form of reproduction of this text, even if partial or for internal and/or didactic purposes, is strictly prohibited without regular authorization.

THE COLORED ONES

A PROJECT FOR THE FUTURE

Future for your projects

EN

THE COLORED ONES